



ECLT Foundation Program in the Philippines with the Department of Labor and Employment (DOLE) 2003 - 2005

Eliminating Child Labour in the Tobacco Industry (ECLTI) Project

Description of the Program

Program background

- ✓ An appraisal of the child labour situation in tobacco-growing in the Philippines was commissioned by Philip Morris International, and was published in February 2002 ([study](#)). The ECLTI project was triggered by this study.

Program target

- ✓ Child labourers between the ages of 7-17, whose work participation is related to the tobacco industry in 100 selected barangays (villages) in the region highlighted on the map (Region 1, which includes the provinces of Ilocos Norte, Ilocos Sur, La Union and Pangasinan).



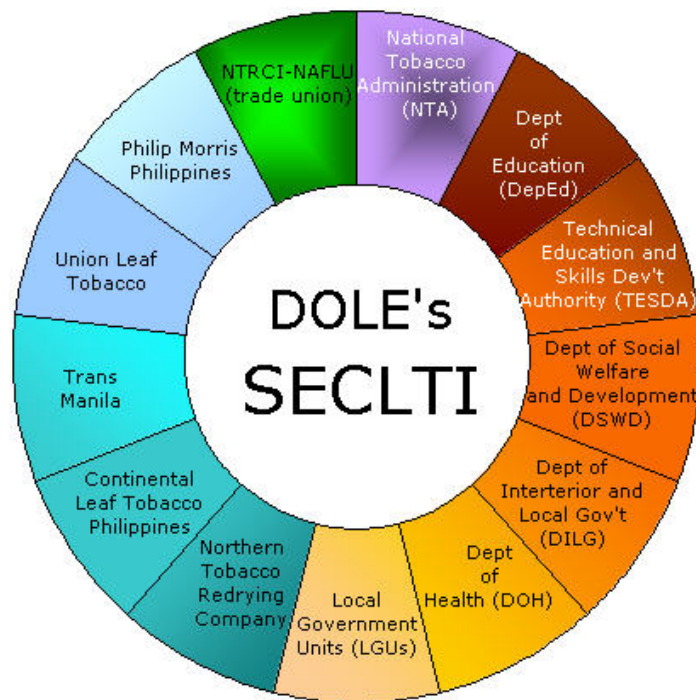
Highlighted region where the program will be implemented

Program framework

- ✓ ECLT Foundation will be funding this program
- ✓ DOLE will be the overall coordinator
- ✓ ILO/IPEC and UNICEF will be performing advisory functions

To implement the program a regional sub-committee for the elimination of child labour in the tobacco industry (SECLTI) has been setup, which is headed by DOLE. The responsibility of this sub-committee is to implement and monitor the ECLTI project at the grassroots level. Please see the sub-committee structure, below.

This program is part of DOLE's National Program against Child Labour, which includes projects supported by ILO/IPEC and UNICEF.



Program details

Regional sub-committee meetings (SECLTI)

A sub-committee has been created, which involves all stakeholders, and helps improve interaction and collaboration among the different partners (DOLE, government departments, tobacco companies, and trade unions). A Memorandum of Understanding has been signed by all partners, which establishes the following:

- ✓ Assess status of program implementation
- ✓ Discuss problems and issues that may arise; and find solutions
- ✓ Maintain working relationship among partners

Survey of child labour situation

The survey will focus on the number of child workers in every tobacco-producing barangay (village) in the region, as well as their work patterns and worker profiles. This will help the SECLTI identify methods of addressing the situation.

Awareness-raising and training

Existing Barangay Councils for the Protection of Children (BCPCs) will be strengthened, new BCPCs will be created. These councils will be composed of barangay captains, a municipal representative, a member of the community, representatives of government departments and a child advocate between the age of 9 and 14. The council will:

- ✓ Take steps to prevent the occurrence of child labour in the community by assisting parents and children to resolve behavioural problems
- ✓ Recommend barangay ordinances and regulations on child labour
- ✓ Prepare a barangays plan of action to address child labour
- ✓ Submit quarterly reports to the SECLTI

Awareness-raising and training

One of the main aspects of the program is parenting and youth counselling and orientation on child labour laws, values and responsible parenthood: there are 20 orientations and 2'000 participants targeted.

Alternative livelihood assistance to child labourers’ and would-be child labourers’ families

As child labour is a more common occurrence among financially-strapped families, 100 beneficiaries, selected based on the survey, input from the BCPCs and SECLTI, will be allotted CHF 130 (PHP 5’000) each to help them setup a small business/livelihood. With the assistance of various social departments and organisations, these families shall be required to prepare livelihood project proposals, which shall then be evaluated and approved by the DOLE. The beneficiaries shall also undergo basic management and entrepreneurship trainings before they are granted the assistance. There will be extra funds allocated to each beneficiary by the LGUs.

Educational assistance

This aspect of the program intends to help 100 child labourers and would-be child labourers acquire primary to technical-vocation education in public schools through educational assistance, by covering all school fees, uniforms and daily allowances.

Budget

The overall program budget is around CHF 130’600 (PHP 5’040’000) spread over 2 years. The breakdown is as follows:

Survey of child labour situation	4%
Regional subcommittee meetings	} 66%
Awareness-raising and training	
Alternative livelihood	
Educational assistance	
Monitoring, evaluation and project documentation	} 30%
Coordination and administrative support	
	100%

The Internal Control Unit of DOLE will conduct a financial audit on a semester basis, which will be reviewed by Philip Morris Philippines. The program monitoring, evaluation and documentation will be executed by DOLE and a NGO.

The program activities will start in June 2003 and finish in May 2005.

Geneva, 2 May 2003